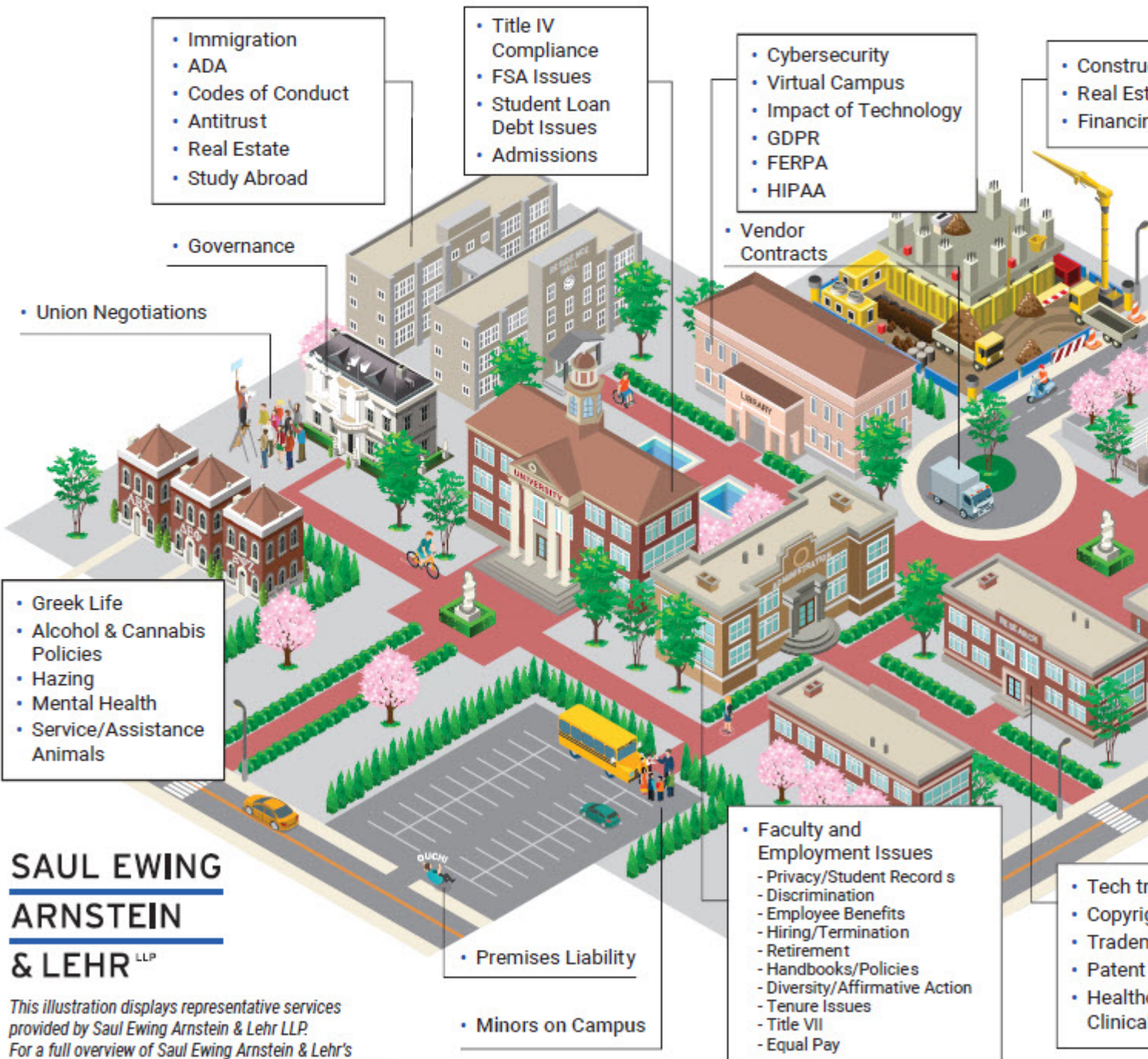


HIGHER EDUCATION - COVERING YOUR CAMPUS'S LEGAL ISSUES

Click Here for a PDF version of this map

HIGHER EDUCATION PRACTICE

Covering Your Campus's Legal Issues



**SAUL EWING
ARNSTEIN
& LEHR^{LLP}**

This illustration displays representative services provided by Saul Ewing Arnstein & Lehr LLP. For a full overview of Saul Ewing Arnstein & Lehr's Higher Education services, please visit www.saul.com